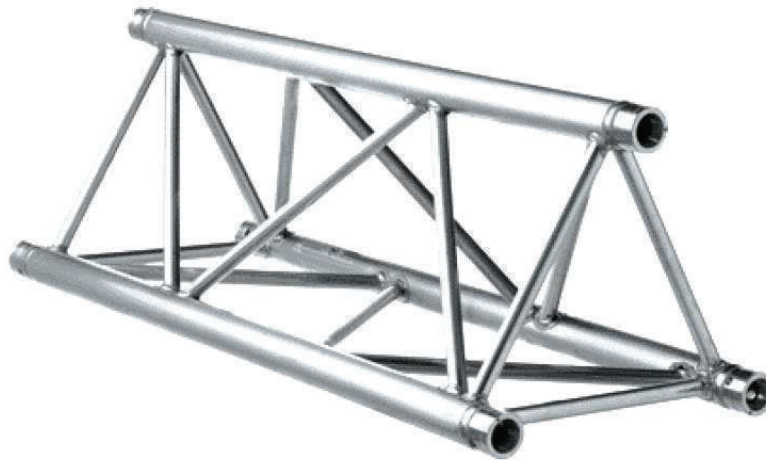
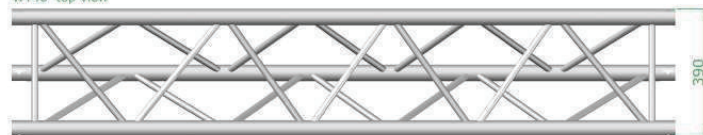


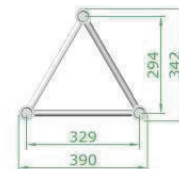
WT40 SERIES



WT40 top view



WT40 side view



Traliccio in alluminio a sezione triangolare con lato da 40 cm.

- A: Tubi correnti Ø 50x2 mm
Lega EN-AW 6082 T6
- B: Diagonali Ø 16x2 mm
Lega EN-AW 6082 T6

Triangular section truss with 40 cm long sides.

- A: Chords extruded tube Ø 50x2 mm
EN-AW 6082 T6
- B: Diagonals extruded tube Ø 16x2 mm
EN-AW 6082 T6

WT40

CODE	DIMENSIONS (cm)	WEIGHT (kg)
WT40/10	39x35.5x10	3.50
WT40/25	39x35.5x25	4.20
WT40/50	39x35.5x50	4.80
WT40/100	39x35.5x100	6.60
WT40/150	39x35.5x150	8.30
WT40/200	39x35.5x200	10.20
WT40/250	39x35.5x250	12.10
WT40/300	39x35.5x300	13.40
WT40/350	39x35.5x350	15.90
WT40/400	39x35.5x400	17.00

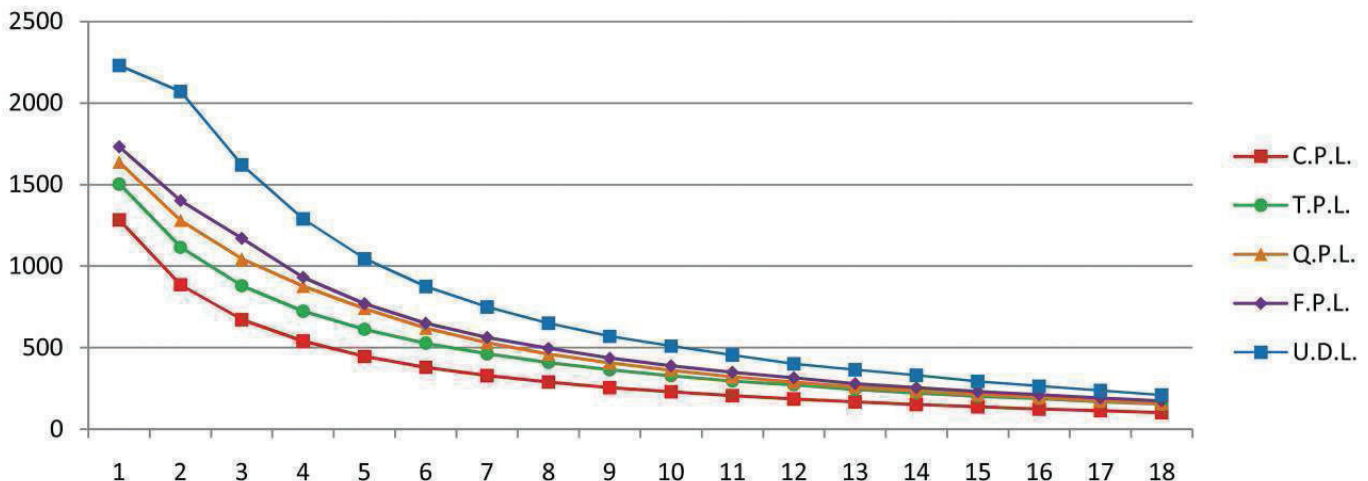
LOAD TABLE WT40

Spam [m]	Centre Point Load (C.P.L.)			Third Point Load (T.P.L.)			Quarter Point Load (Q.P.L.)			Fifth Point Load (F.P.L.)			Uniformly Distributed Load (U.D.L.)		
	Point Load [Kg]	Full Load [Kg]	Central Deflection [mm]	Point Load [Kg]	Full Load [Kg]	Central Deflection [mm]	Point Load [Kg]	Full Load [Kg]	Central Deflection [mm]	Point Load [Kg]	Full Load [Kg]	Central Deflection [mm]	Point Load [Kg]	Full Load [Kg]	Central Deflection [mm]
1	1828	1284	0	1000	1504	0	700	1638	0	540	1732	0	2458	2230	0
2	886	886	1	558	1116	1	427	1280	1	351	1402	1	1103	2070	1
3	672	672	3	440	880	3	348	1044	3	293	1170	3	733	1620	3
4	540	540	5	362	724	6	292	877	6	233	932	6	443	1290	7
5	446	446	9	307	613	10	247	740	10	193	770	11	282	1046	13
6	380	380	14	264	528	15	207	620	16	163	650	18	194	875	20
7	330	330	19	232	463	22	177	532	24	141	562	25	141	750	28
8	290	290	26	205	410	30	154	462	33	124	496	34	107	650	38
9	256	256	34	183	365	39	136	408	44	109	436	44	84	570	49
10	230	230	43	164	328	50	121	362	56	98	390	55	67	510	61
11	206	206	54	148	296	62	107	322	68	88	350	66	54	455	75
12	186	186	65	136	272	75	97	290	82	79	315	83	45	402	90
13	168	168	78	123	245	90	87	260	96	70	280	97	38	365	106
14	152	152	90	111	222	106	79	237	112	64	255	114	32	332	124
15	138	138	106	101	202	124	72	215	132	58	232	132	29	294	143
16	124	124	123	94	188	143	66	197	152	53	212	152	23	265	163
17	113	113	144	84	168	166	58	175	171	48	192	172	19	238	186
18	102	102	160	78	155	190	53	159	193	44	174	194	17	210	204

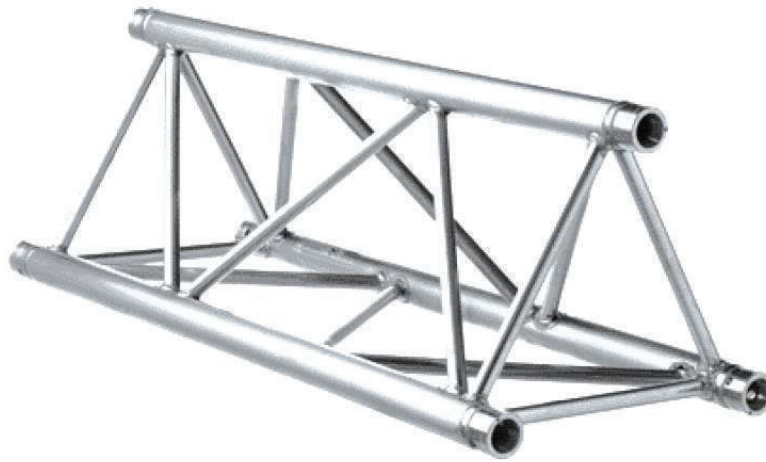
Calcolo eseguito in conformità della norma Europea **Eurocodice 9, UNI ENV 1992**, "Progetto di strutture in alluminio"

Calculated according to European **Eurocode 9, UNI ENV 1992** "Project of aluminum structures".

Description	Specification
External dimension	390 x 390 mm
Alloy	EN-AW 6082 T6
Main tube	Ø 50x2 mm EN-AW 6082 T6
Braces	Ø 20x2 mm EN-AW 6082 T6
Connecting	WKC Spigot series
Welding process	TIG (EWF - EN ISO 9606-2 - 2004)
Available length (cm)	50-100-150-200-250-300-350-400



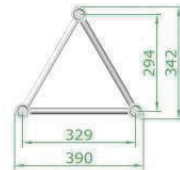
WT40S SERIES



WT40S top view



WT40S side view



Traliccio in alluminio a sezione triangolare rinforzato con lato da 40 cm.

- A: Tubi correnti \varnothing 50x3 mm
Lega EN-AW 6082 T6
- B: Diagonali \varnothing 20x2 mm
Lega EN-AW 6082 T6

Triangular section heavy duty truss with 40 cm long sides.

- A: Chords extruded tube \varnothing 50x3 mm
EN-AW 6082 T6
- B: Diagonals extruded tube \varnothing 20x2 mm
EN-AW 6082 T6

WT40S

CODE	DIMENSIONS (cm)	WEIGHT (kg)
WT40S/10	39x35.5x10	3.20
WT40S/25	39x35.5x25	3.60
WT40S/50	39x35.5x50	3.80
WT40S/100	39x35.5x100	6.30
WT40S/150	39x35.5x150	8.80
WT40S/200	39x35.5x200	11.20
WT40S/250	39x35.5x250	13.60
WT40S/300	39x35.5x300	16.20
WT40S/350	39x35.5x350	18.40
WT40S/400	39x35.5x400	21.20



LOAD TABLE WT40S

Spam [m]	Centre Point Load (C.P.L.)			Third Point Load (T.P.L.)			Quarter Point Load (Q.P.L.)			Fifth Point Load (F.P.L.)			Uniformly Distributed Load (U.D.L.)		
	Point Load [Kg]	Full Load [Kg]	Central Deflection [mm]	Point Load [Kg]	Full Load [Kg]	Central Deflection [mm]	Point Load [Kg]	Full Load [Kg]	Central Deflection [mm]	Point Load [Kg]	Full Load [Kg]	Central Deflection [mm]	Point Load [Kg]	Full Load [Kg]	Central Deflection [mm]
1															
2	1790	1790	3	502	1003	2	244	732	2	138	550	2	1103	2206	2
3	1189	1189	6	445	890	5	198	594	5	123	493	5	733	2199	5
4	887	887	10	333	665	8	148	443	8	92	368	8	443	1772	8
5	705	705	16	265	529	13	117	352	13	73	292	13	282	1410	13
6	583	583	23	219	437	18	97	291	18	61	242	18	194	1164	18
7	495	495	31	186	371	25	82	247	25	51	205	25	141	987	25
8	430	430	41	161	321	33	71	214	33	45	178	33	107	856	33
9	370	370	51	141	282	41	63	188	41	39	156	41	84	756	41
10	335	335	63	125	250	51	56	167	51	35	138	51	67	670	51
11	300	300	77	112	224	61	50	150	61	31	124	61	54	594	61
12	269	269	91	101	201	73	45	134	73	28	111	73	45	540	73
13	243	243	107	91	182	86	40	121	86	25	101	86	38	494	86
14	221	221	124	83	166	101	37	110	101	23	91	101	32	448	101
15	201	201	143	75	150	114	34	101	114	21	83	114	29	435	114
16	185	185	162	69	137	130	31	92	130	19	76	130	23	368	130
17	168	168	183	63	125	147	28	84	147	18	70	147	19	323	147
18	154	154	206	58	115	165	26	77	165	16	64	165	17	306	165

Calcolo eseguito in conformità della norma Europea Eurocodice 9, UNI ENV 1992, "Progetto di strutture in alluminio"

Calculated according to European Eurocode 9, UNI ENV 1992 "Project of aluminum structures".

Description	Specification
External dimension	390 x 390 mm
Alloy	EN-AW 6082 T6
Main tube	Ø 50x3 mm EN-AW 6082 T6
Braces	Ø 20x2 mm EN-AW 6082 T6
Connecting	WKC Spigot series
Welding process	TIG (EWF - EN ISO 9606-2 - 2004)
Available length (cm)	50-100-150-200-250-300-350-400

